



Manufactured
in the UK



**Safelab Systems
Products**

Filtration Fume
Cupboards

Ducted Fume
Cupboards

Extract Systems

Cyclonic Scrubbers

Horizontal Laminar
Flow Cabinets

Vertical Laminar
Flow Cabinets

Safety Cabinets

Forensic Safety Cabinets

Polypropylene Cabinets

Glove Boxes

Storage Cabinets

**Safelab Systems
Service**

Maintenance Contracts

Airflow Testing

Ductwork Testing

Filter Testing

DOP Testing

KI Discus Testing

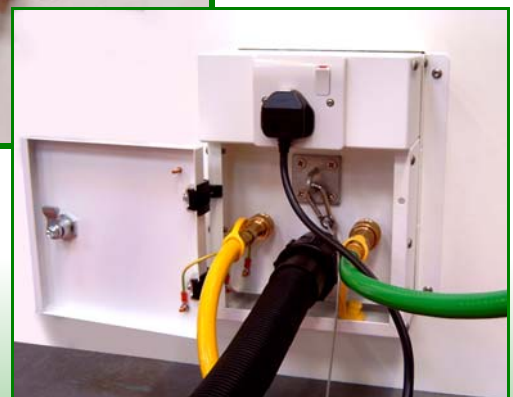
Installation

Commissioning

Lockable Service Docking Station for use with Airone 1000RS mobile fume cupboard



Increased safety
within the laboratory.



**Designed specifically to offer an
additional safety feature within
the laboratory.**

**The (mobile fume cupboard)
service docking station stops unauthorised access to mains service
supplies.**

Water, waste and gas are securely locked away when not in use.

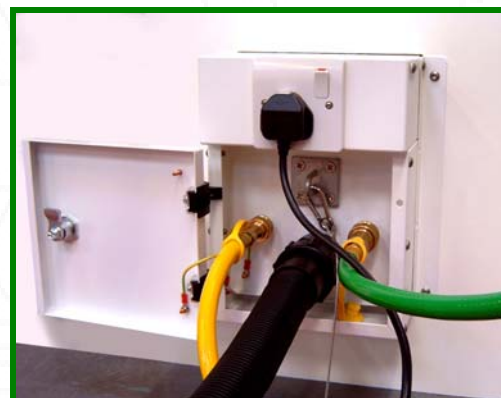
www.safelab.co.uk



Lockable Service Docking Station for use with Airone 1000RS mobile fume cupboard



- Sturdy construction: epoxy coated mild steel
- Robust lock
- Strong hinges
- Easily sited
- Recess or flush mounted
- Isolated 13amp single switch electrical socket
- Quick release connections to water, waste and gas



**Increased safety
within the laboratory.**

Safelab Systems Ltd

Unit 29 Lynx Crescent, Weston Super Mare, North Somerset. BS24 9BP

Tel: +44 (0) 870 240 2273

Fax: +44 (0) 870 240 2274

E-mail: safelab@safelab.co.uk

www.safelab.co.uk